



RYDYM YN DARGANFOD,
RYDYM YN TYFU
WE DISCOVER, WE GROW

Girlguiding

Central Glamorgan
Morgannwg Ganol

January Newsletter 2022

-- A message from the County Commissioner --

Happy New Year! Lets hope this year improves and we see more normality in our lives. I hope you all have a restful Christmas. 2022 let's make this a year of fun, friends and laughter! World Thinking

Day our Founders Birthday is a Palindrome 22.02.2022. Find out more about both in our activity pack and don't forget to order your badges - they are limited! It's also the Queens Platinum Jubilee watch this space - I hope we can celebrate such an achievement.

On a more serious note, don't forget to ensure your GO data is up to date for our Yearly Subscription. Also please check you are up to date with your DBS, Safe Space and First Response as a minimum.

Girlguiding offers training/ learning opportunities which can be found on the Girlguiding Webpage and or in your GO record under learning opportunities - have a look you may be surprised as to what is on offer.

It was good to meet some of you last year and I hope I and the team can get out and about more in the county. Drop me an email - I would love to visit!!

Julie.girlguidingcgc@gmail.com

Tesco Community Grant

We have been successful in applying for Tesco Community Grants. This is part of the token voting scheme. Voting will commence from the first week of January 2022 until 31st March 2022.

Competition Time!

Could your unit be the winners of the new county logo?

Do your girls want a new logo or would they like to fill the gap?

Please download this [document](#) to see the spec, designs are welcome on plain paper also.

Please email your design entries to:
pr.girlguidingcg@gmail.com

Subscriptions

- Tuesday 25 January 2022**
midday: Trial invoices. Download and check. Amend if incorrect. Changes will appear the following day.
- Tuesday 8 February 2022** Girlguiding will send an email reminder if you haven't downloaded your trial invoice.
- Monday 21 February 2022** From 7pm No more changes can be made to trial invoices.
- Tuesday 22 February 2022** Official and payable invoices will be available to download. You will receive an email to let you know.
- Friday 18 March 2022** We'll send a reminder email to the main contact of any level that hasn't yet paid their official invoice.
- Friday 1 April 2022** All subscription payments must be received in full by this date.

2022 Key Dates

Cymru

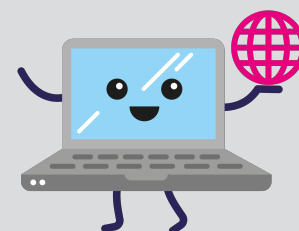
RYDYM YN DARGANFOD,
RYDYM YN TYFU
WE DISCOVER, WE GROW

Girlguiding

DBS Checks

Please keep reminding Leaders to check your emails and their communications on GO. This is part of Safeguarding and does need to be kept in compliance. CHQ do check and send reminders if nothing happens they will take you off GO and send you a letter stating you are no longer a member of Guiding and that you cannot rejoin the organisation for 3 years.

Safe Space



If you are a Leader please consider doing safe space level 3 this is going to become compulsory for all Leaders. Also it is good practice to have multiple leaders in each unit with level 3, so that if a leader is ill, or unavailable for whatever reason, the unit can continue to meet. Please look on GG Cymru Website for dates.

First Response

Courses start at 9:30am

6th February at Abercynon Community Centre, Abercynon
15 places

15th May at Gilead Chapel, Coity 18 places

13th August at Gorwelion, Porthcawl 23 places

26th Nov place to be confirmed

Email Firstaid.girlguidingcg@gmail.com for more information



What's Happening In Girlguiding Cymru?

Amdani- Virtual Event
Walking Weekend
Broneirion Spring Forward Weekend
Sports Educator Level 1

What Trainings are available in Girlguiding Cymru?

<https://girlguidingcymru.org.uk/training-events>

COVID-19
January 2022

Risk Assessment Process

Girlguiding Cymru
RYDYM YN DARGANFOD,
RYDYM YN TYFU
WE DISCOVER, WE GROW

Returning to face to face meetings for the first time

Download and complete the risk assessment. This can be found on our C-19 page. Please submit to the Girlguiding Cymru Safeguarding & Risk Assessment Team

Please also ensure you copy your local Commissioner into the E-mail.

riskassessment@girlguidingcymru.org.uk

Continuing meetings in Alert L2 with a pre approved risk assessment

Before returning to meetings please update your existing risk assessment.

The following should be taken into account when in alert level 2.

- Circumstances & safety of leadership team.
- The quantity of education settings that members attend.
- Safety of vulnerable young members.
- Local COVID-19 figures.

This needs to be sent to your local Commissioner.

Planning the following

- Day trip
- Camp
- Residential

When planning these events, you must include COVID-19 safety.

The relevant forms and risk assessment can be sent to your local commissioner.

These do not need to be sent to the Girlguiding Cymru Safeguarding and Risk Assessment Team.

World Thinking Day Palindrome pack 2022

Thinking Day 2022 is a palindrome! To celebrate this, we have put this pack together to give you some ideas of what you can do with your units. It's jam packed full of suggestions, feel free to adapt, change slightly to suit your section. Choose 6 activities from this pack to complete with your unit, in order to get the badge!! The pack is FREE to download [HERE](#), please place orders for badges early as we have limited stock so they will be allocated on a first come first served basis.

Wellies and Wristbands 2022

If you are interested in attending wellies and wristbands your deposit needs to be in by no later the 7th Feb, Please see Decembers newsletter for more information



Send us your news

This is your newsletter. Please send items in for us to share. If you'd like to send photos too that would be great! Central Glamorgan is a fantastic County so let's shout about it!!! Please send to the email address below by February the 15th.

newsletter.girlguidingcg@gmail.com